

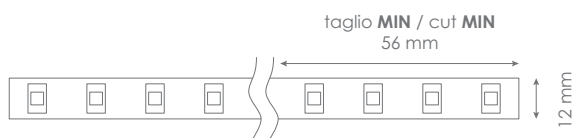
# FLEX - PLUS 2500-3000

## Led Strip



Alimentazione / Operating Voltage	24 V
Potenza / Power	22 W/mt
Larghezza Pcb / Width Pcb	12 mm
Altezza / Height Stripe	2 mm
Lunghezza / Length Stripe	5000 mm
Taglio segmento/ Length per Cut	56 mm
N° LED	126 / mt
IP	20
Temperatura esercizio Storage Temperature	- 30° C - + 70°C
Lifetime	L70B20 50000H

	Flusso Luminoso Luminous Flux	Efficienza Efficiency	Colore Luce Led Color
DA-PLUS-2500-3000	2037 lm/mt	135 lm/W	3000 K



Via Cadorna, 40/42  
20032 Cormano (MI)  
Tel. +39 02 84269630  
Fax +39 02 84269631  
info@dadalighting.com  
www.dadalighting.com

**FLEX - PLUS 2500-3000**  
*Led Strip*

Light efficiency:



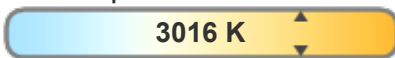
**Output: 2037 lm**

Light quality:

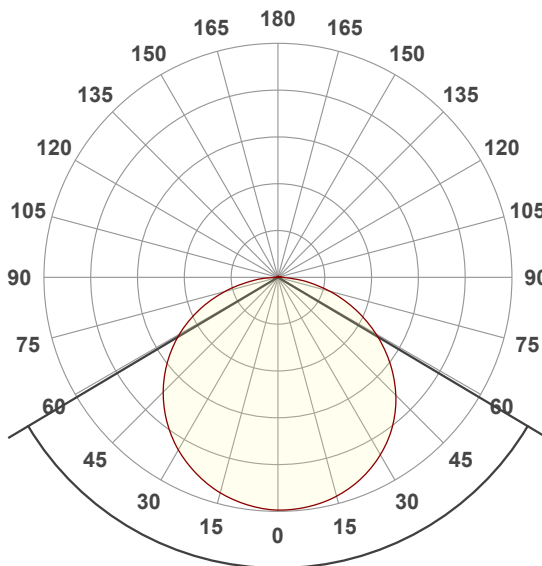


**Peak: 656 cd**

Color temperature:



**Power: 22,0 W**  
**24,0V @ 0,917A**



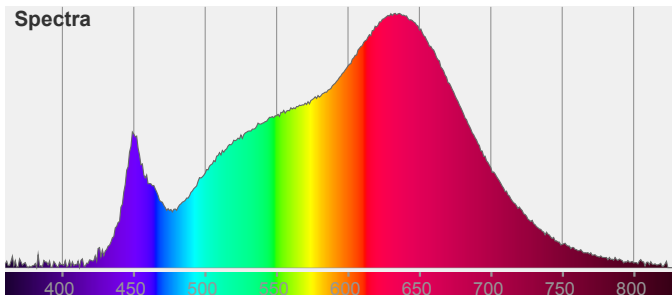
Beam angle **118,4°**

Color



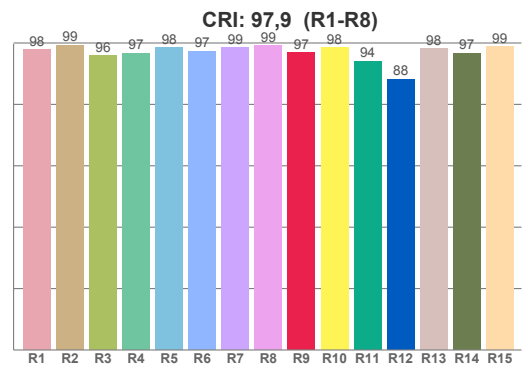
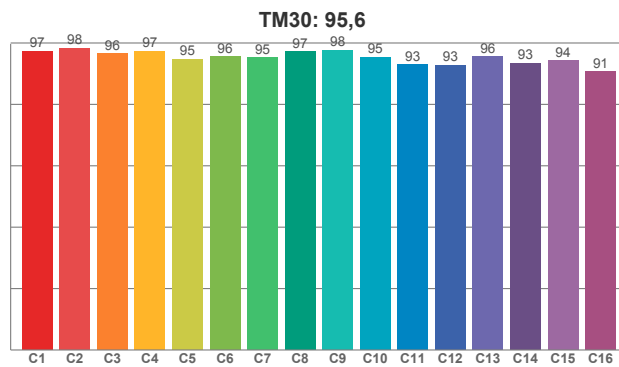
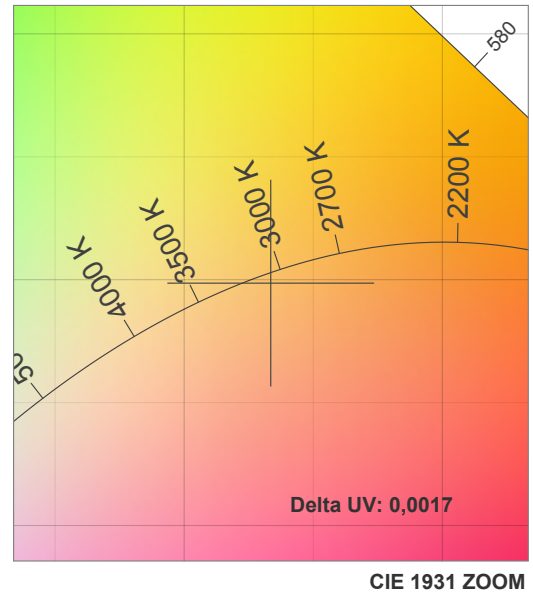
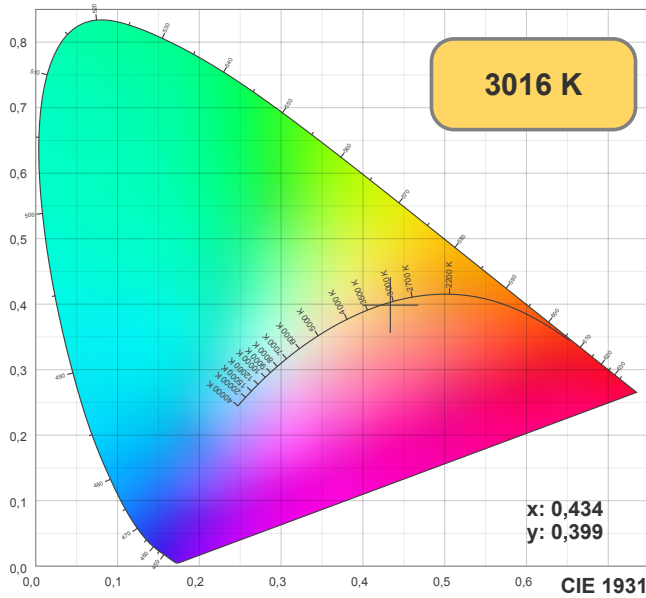
CIE1931  
x: 0,434  
y: 0,399

Spectra



# FLEX - PLUS 2500-3000

## Led Strip



**CRI R values, only R1-R8 are used to calculate final CRI value**

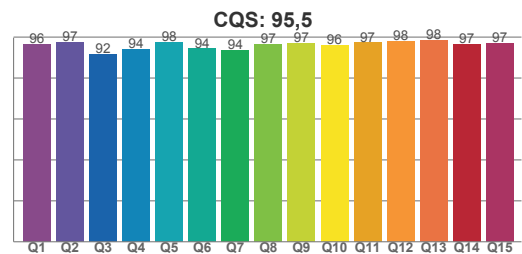
R1	R2	R3	R4	R5	R6	R7	R8	R9	R10	R11	R12	R13	R14	R15
97,87	99,32	95,94	96,65	98,49	97,31	98,57	99,15	96,93	98,47	94,11	88,23	98,11	96,69	98,81

**TM30 C values, 16 binned values out of total of 99 C values**

C1	C2	C3	C4	C5	C6	C7	C8	C9	C10	C11	C12	C13	C14	C15	C16
97,40	98,31	96,49	97,31	94,78	95,55	95,28	97,26	97,63	95,39	92,96	92,76	95,57	93,38	94,15	90,75

**CQS Q values**

Q1	Q2	Q3	Q4	Q5	Q6	Q7	Q8	Q9	Q10	Q11	Q12	Q13	Q14	Q15
96,43	97,47	91,86	94,21	97,72	94,33	93,51	96,61	97,03	96,25	97,25	98,06	98,33	96,52	96,91

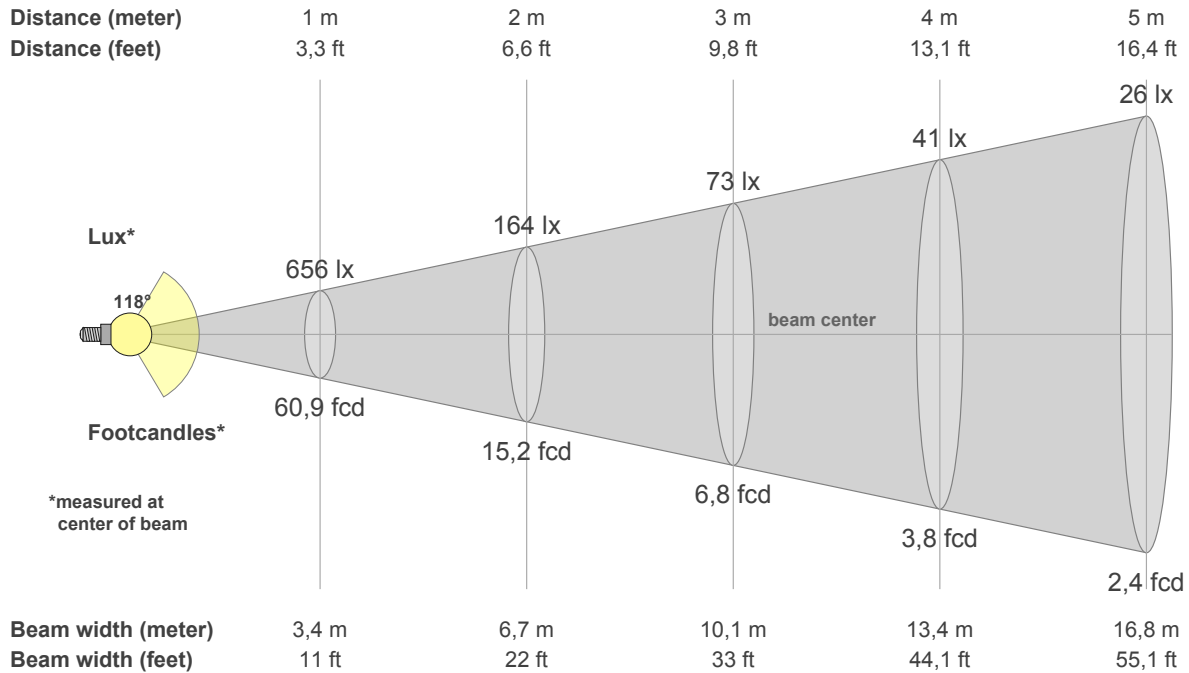


### Color parameters

CCT	CRI	CRI R9	TM30 Rf	TM30 Rg	CQS	x	y	u	v	Duv
3016 K	97,9	96,9	95,6	102,5	95,5	0,4	0,4	0,3	0,3	-0,0017

# FLEX - PLUS 2500-3000

## Led Strip



### Intensities in 0° c-plane

0°	5°	10°	15°	20°	25°	30°	35°	40°	45°	50°	55°	60°	65°	70°	75°	80°	85°	90°	95°
656	654	648	638	623	602	577	547	510	470	423	372	319	264	208	152	97	51	16	5
100%	100%	99%	97%	95%	92%	88%	83%	78%	72%	64%	57%	49%	40%	32%	23%	15%	8%	2%	1%

### Intensities in 0° c-plane

0°	5°	10°	15°	20°	25°	30°	35°	40°	45°	50°	55°	60°	65°	70°	75°	80°	85°	90°	95°
656	654	648	638	623	602	577	547	510	470	423	372	319	264	208	152	97	51	16	5
100%	100%	99%	97%	95%	92%	88%	83%	78%	72%	64%	57%	49%	40%	32%	23%	15%	8%	2%	1%

### Intensities in 180° c-plane

0°	5°	10°	15°	20°	25°	30°	35°	40°	45°	50°	55°	60°	65°	70°	75°	80°	85°	90°	95°
656	651	642	628	610	587	561	530	496	457	414	369	320	267	213	156	101	52	15	5
100%	99%	98%	96%	93%	90%	86%	81%	76%	70%	63%	56%	49%	41%	32%	24%	15%	8%	2%	1%

### Intensities in 180° c-plane

0°	5°	10°	15°	20°	25°	30°	35°	40°	45°	50°	55°	60°	65°	70°	75°	80°	85°	90°	95°
656	651	642	628	610	587	561	530	496	457	414	369	320	267	213	156	101	52	15	5
100%	99%	98%	96%	93%	90%	86%	81%	76%	70%	63%	56%	49%	41%	32%	24%	15%	8%	2%	1%

Beam angle 50%	Field angle 10%	Cutoff angle 2,5%	Intensity ratio in 120° cone	Intensity ratio in 90° cone
118,4°	166,7°	179,8°	75,6%	50,6%